

wi4-ab-1r-4 /-9

DEMONTAGE DEMOUNTING



TECHNISCHE DATEN
TECHNICAL DATA



Hersteller *Manufacturer:* mawa
 Artikel-Nummer *Article Number:* **wi4-ab-1r-4/ -9**

Spannung *Voltage:* 220 – 240 V
 Netzfrequenz *Power freq.:* 50/60 Hz
 Schutzklasse *Protection class:* I
 Schutzgrad *Degree of protection:* IP20

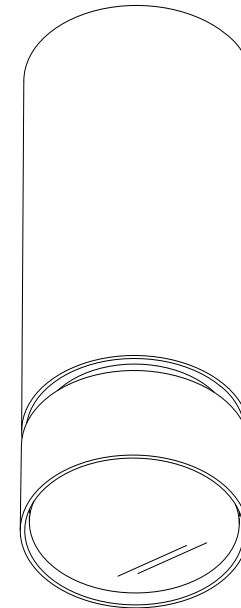
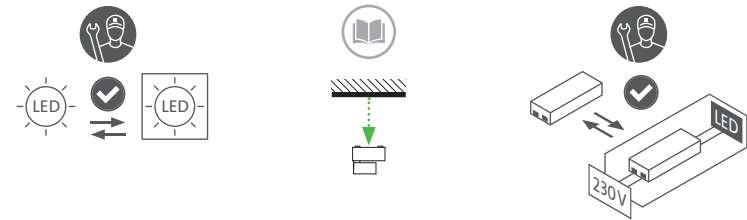
Leuchtmittel *Light source:*

- 1 × Standard-LED:
RA > 90 / 12,7 W / 700 mA / Vf 18 V
- 1 × LED Modul High CRI:
RA > 95 / 12,7 W / 700 mA / Vf 18 V
- 1 × dim2warm-LED:
Ra > 95 / 12 W / 350 mA / Vf 36,5 V

Dimmung *Dimming:* DALI (-4)
 Bluetooth (-9)

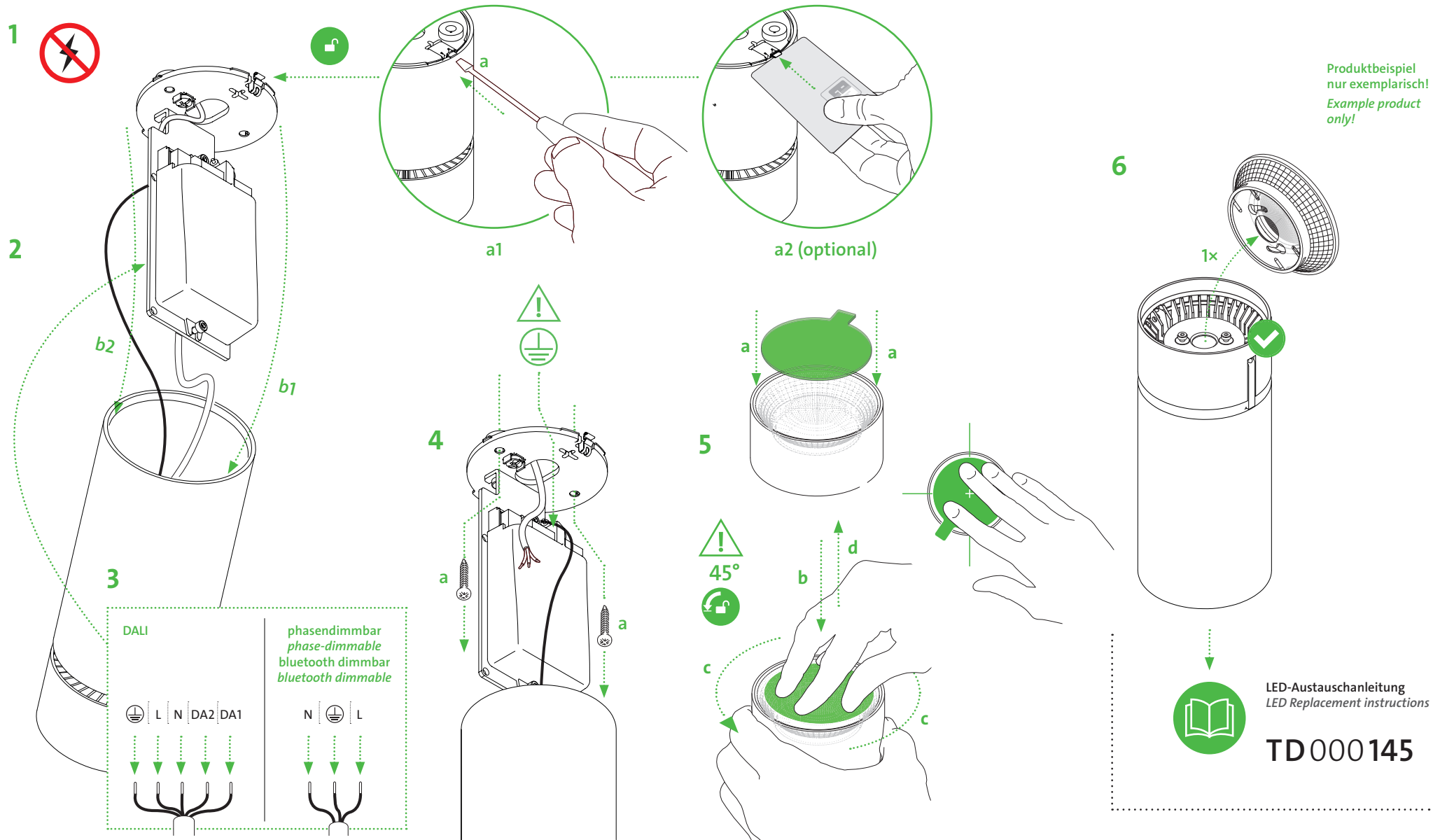
Anschlussleistung *Connected load:* Standard 15 W
 dim2warm 16 W

AUSTAUSCHBARKEIT
REPLACE ABILITY



wi4-ab-1r-4 /-9

DEMONTAGE DEMOUNTING



Produktbeispiel
nur exemplarisch!
Example product
only!

LED-Austauschanleitung
LED Replacement instructions

TD000145